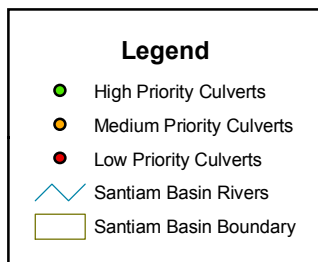
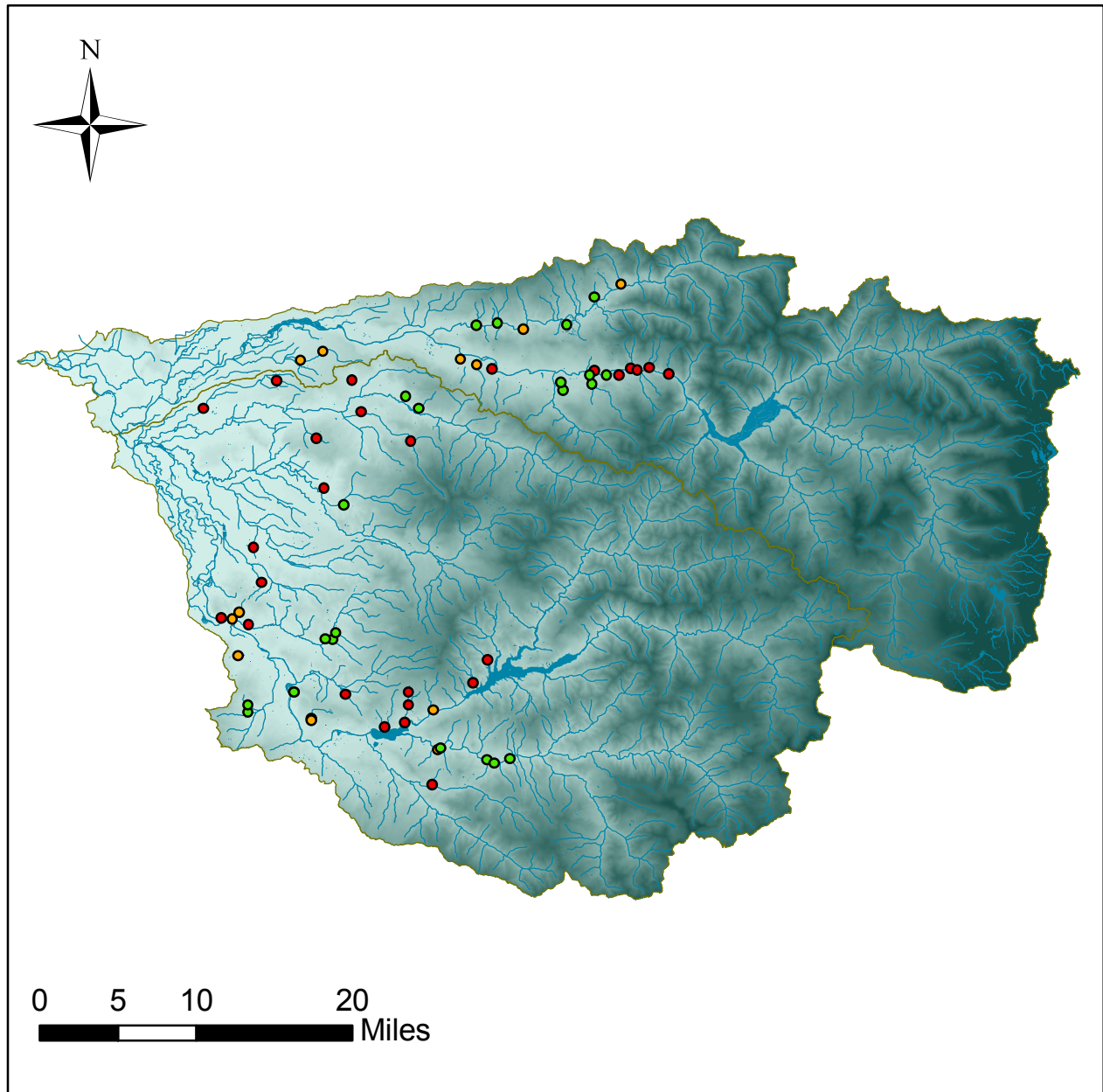


Overview of the North and South Santiam River Basins



Map illustrates an overview of the North and South Santiam River Basins with rivers and surveyed culverts. The culverts are prioritized as high, medium and low for restoration of aquatic connectivity. The stream layer is sourced from the National Hydrography Dataset.

Projection: Lambert Conformal Conic
GCS: NAD 1983
Datum: NAD 1983
Units: Feet